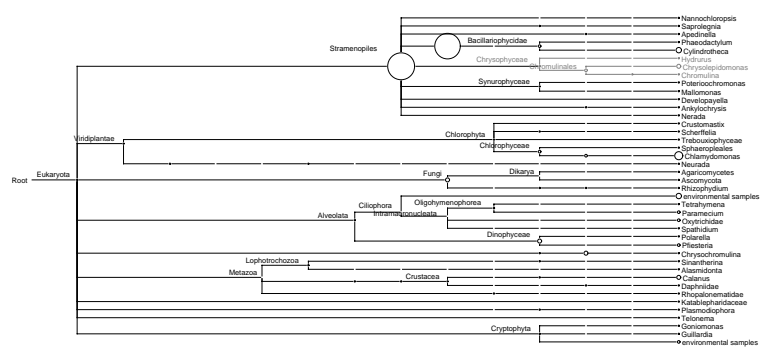


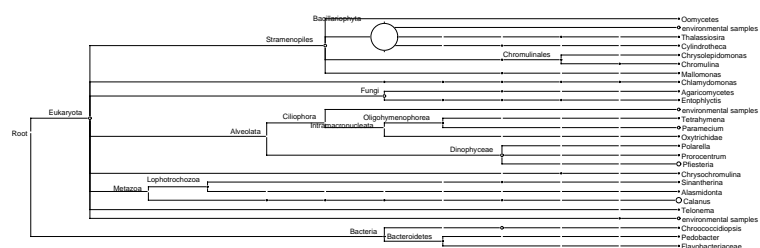
# Comparison of clipped vs. unclipped read assignments

January 7, 2015

## Above Sediment



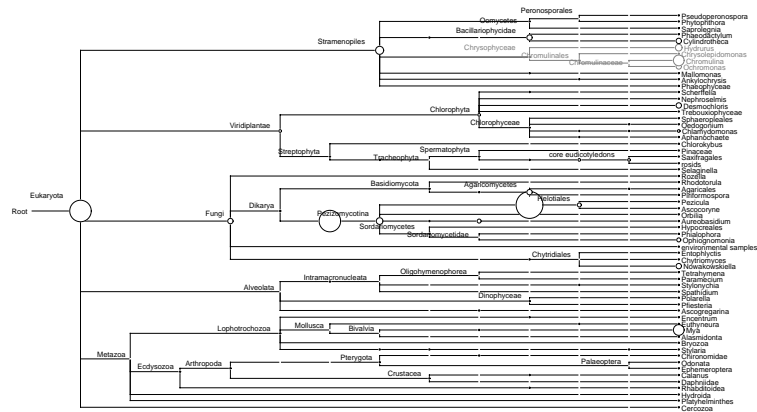
(a) clipped reads



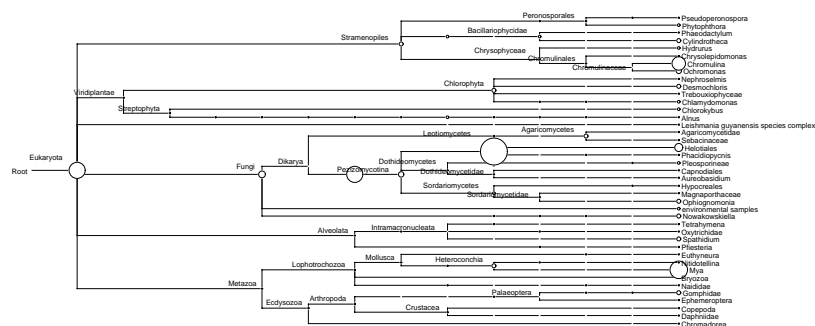
(b) unclipped reads

Figure 1: Reads from "AboveSed" sample assigned to Silva LSU sequences

## Benthos



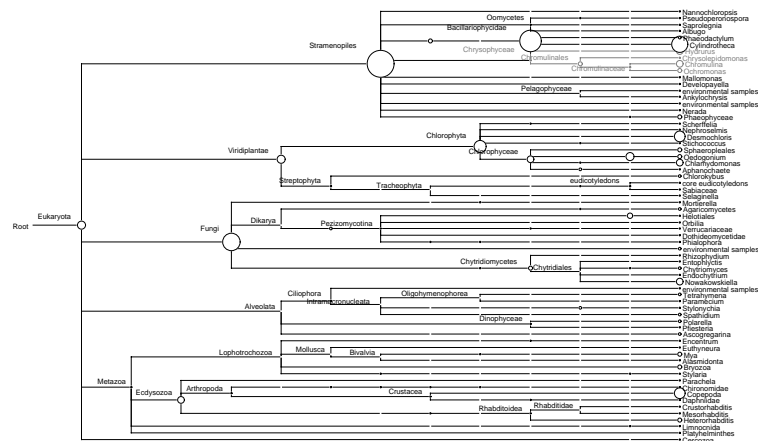
(a) clipped reads



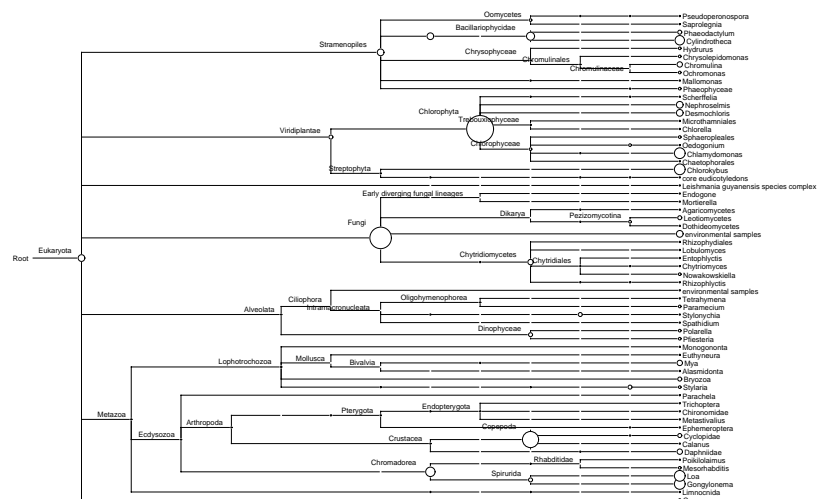
(b) unclipped reads

Figure 2: Reads from "Benthos" sample assigned to Silva LSU sequences

# Biofilm



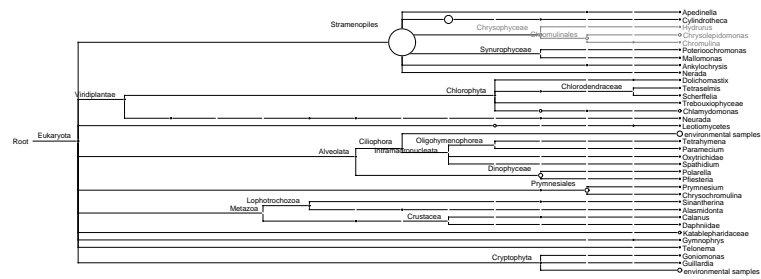
(a) clipped reads



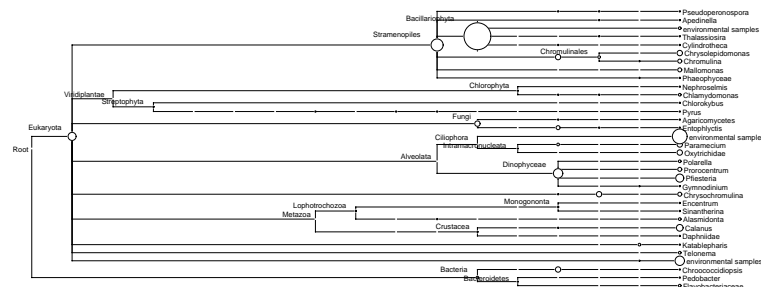
(b) unclipped reads

Figure 3: Reads from "Biofilm" sample assigned to Silva LSU sequences

# Littoral



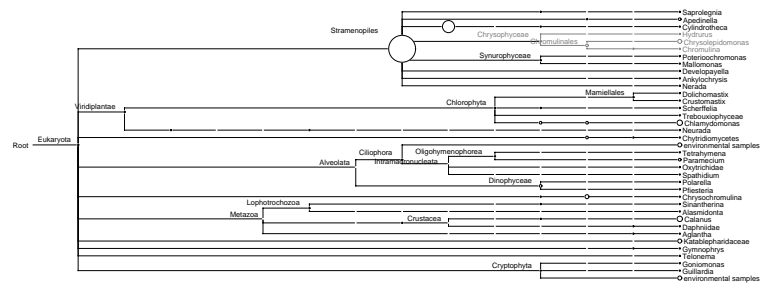
(a) clipped reads



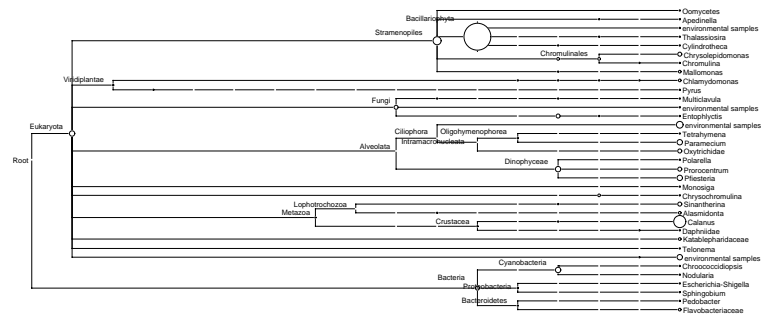
(b) unclipped reads

Figure 4: Reads from "Littoral" sample assigned to Silva LSU sequences

## Pelagial



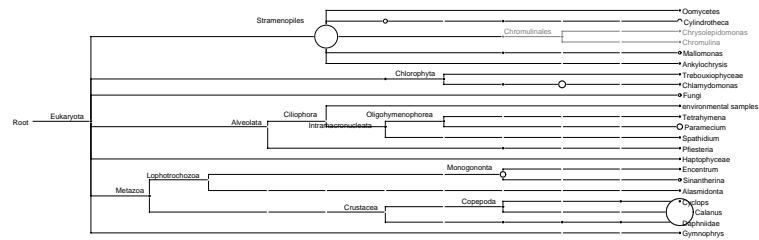
(a) clipped reads



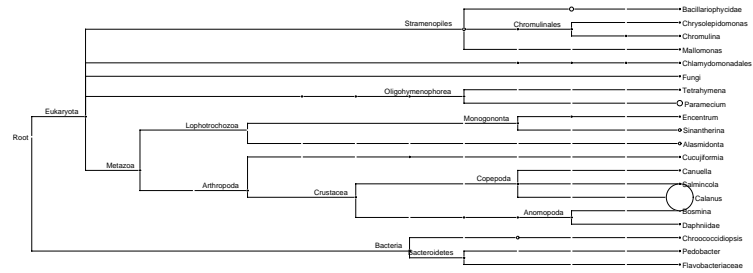
(b) unclipped reads

Figure 5: Reads from "Pelagial" sample assigned to Silva LSU sequences

# Plankton



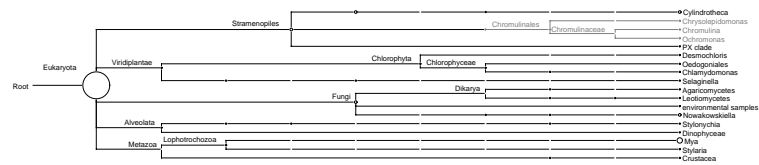
(a) clipped reads



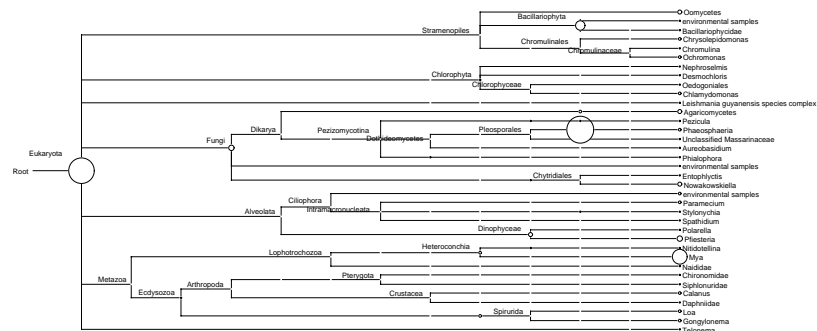
(b) unclipped reads

Figure 6: Reads from "Plankton" sample assigned to Silva LSU sequences

## Reed



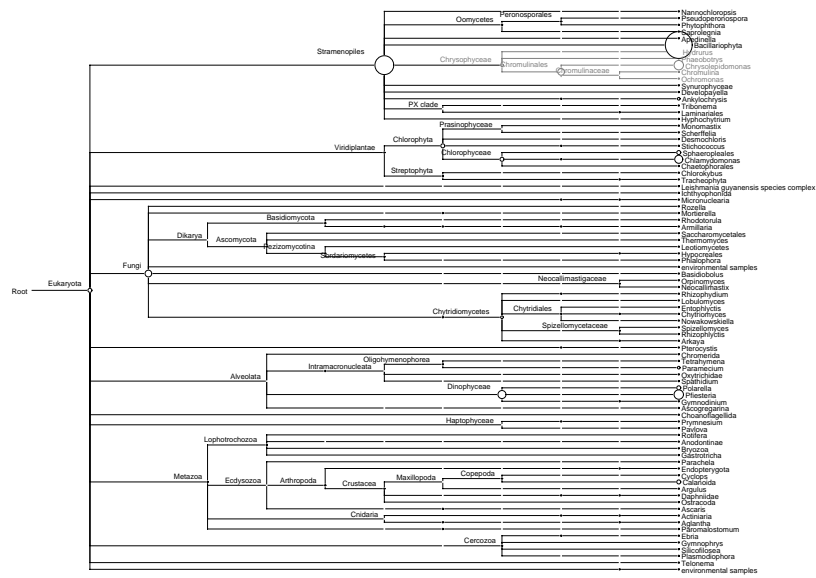
(a) clipped reads



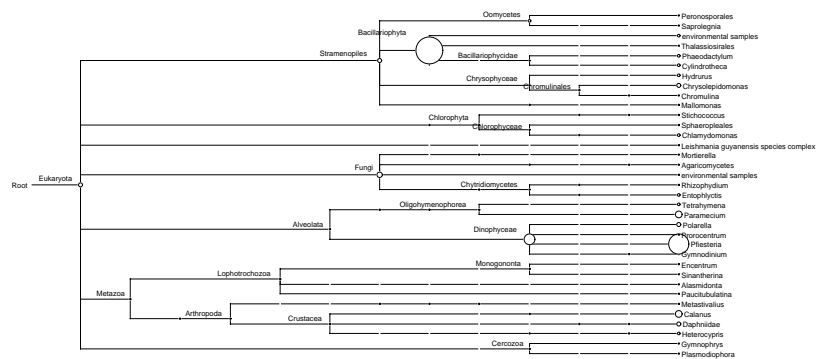
(b) unclipped reads

Figure 7: Reads from "Reed" sample assigned to Silva LSU sequences

# Sediment



(a) clipped reads



(b) unclipped reads

Figure 8: Reads from "Sediment" sample assigned to Silva LSU sequences